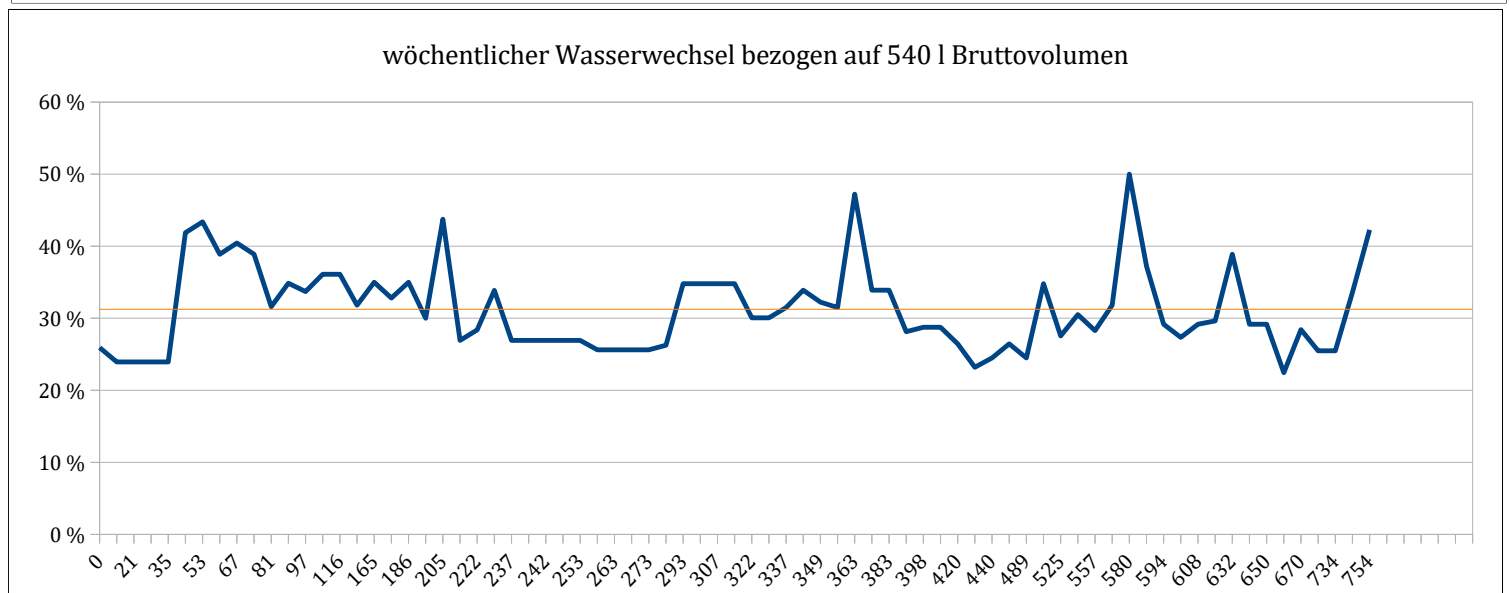
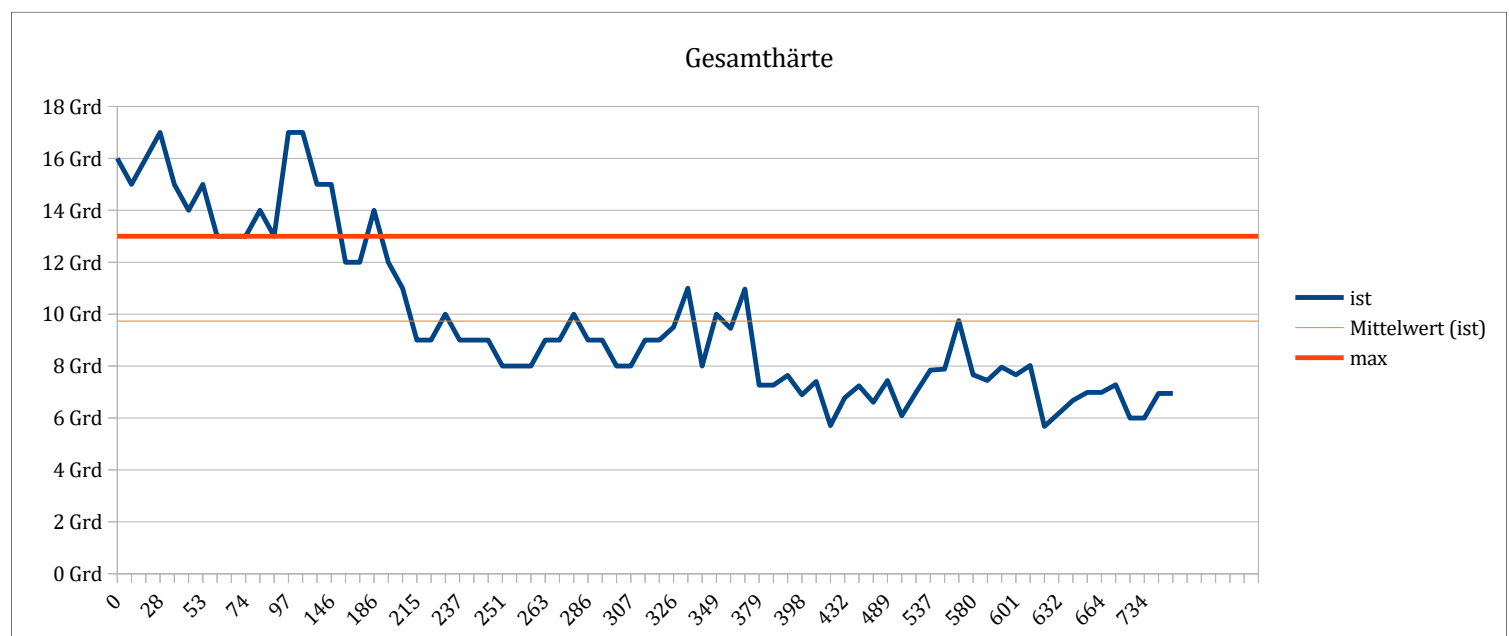
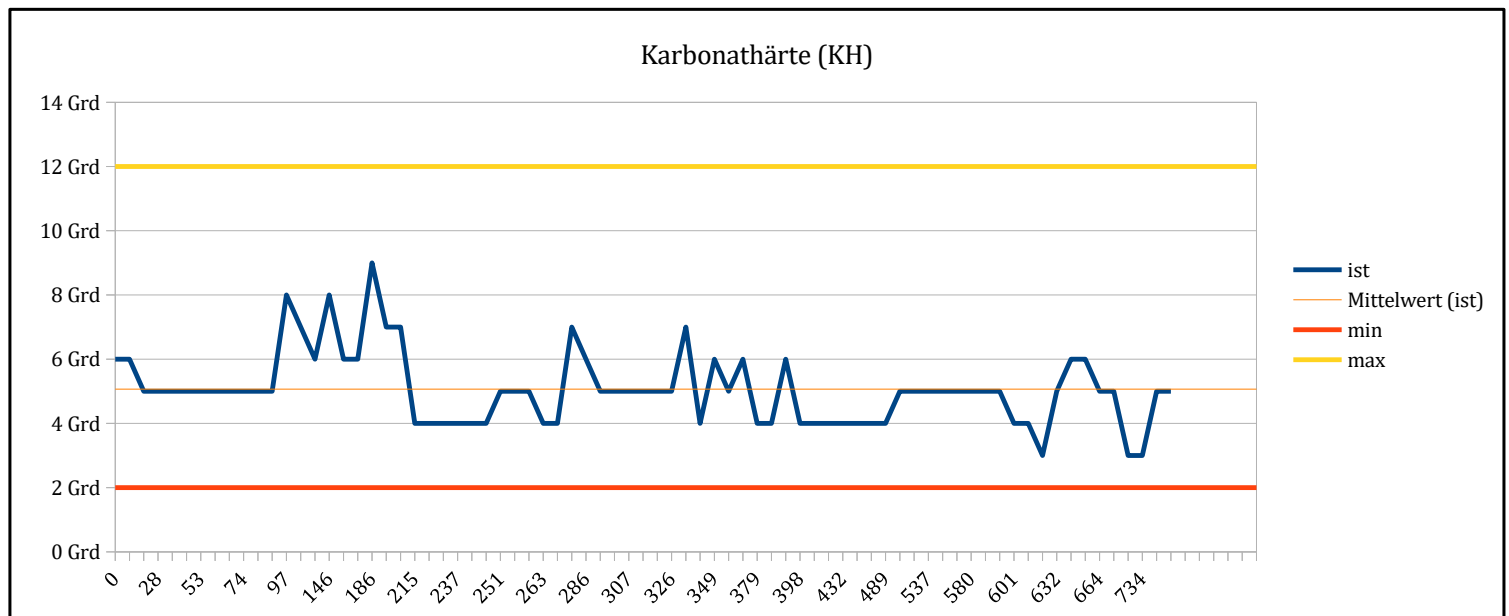


Migration der Analysen

Zeitachse in Tagen, Stand: 04.01.25

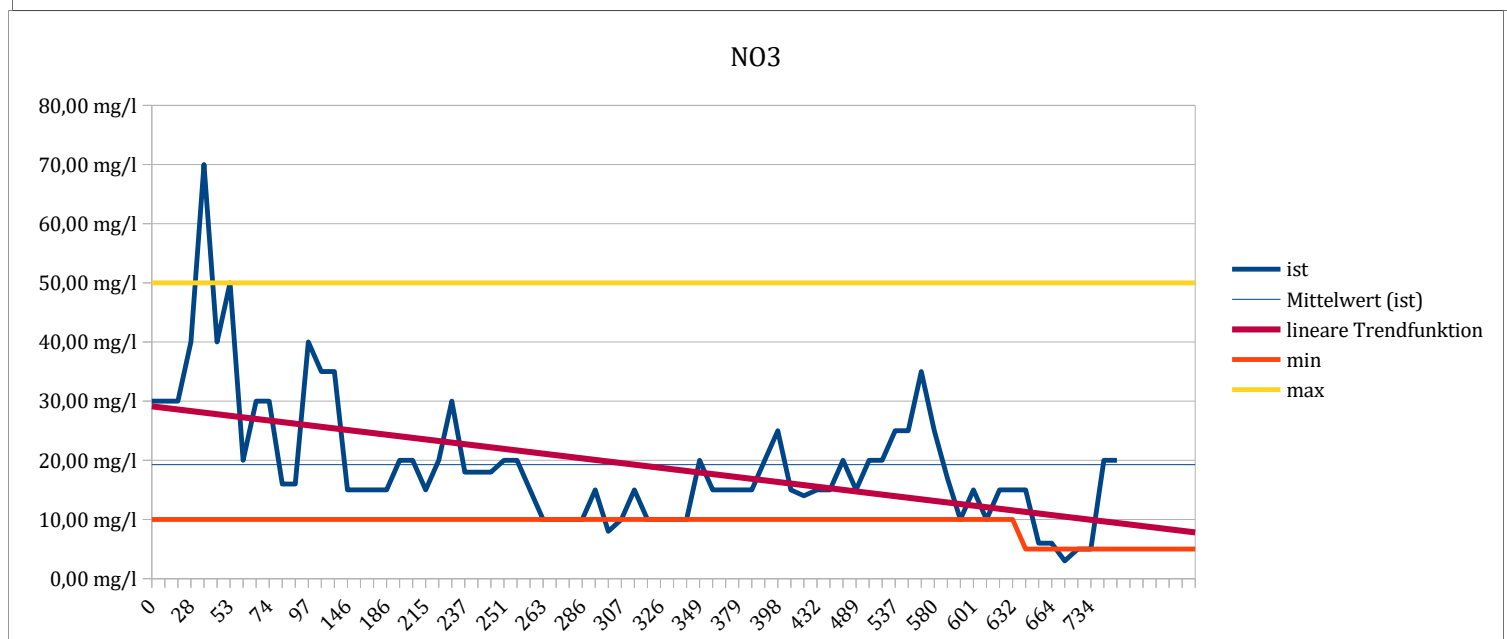
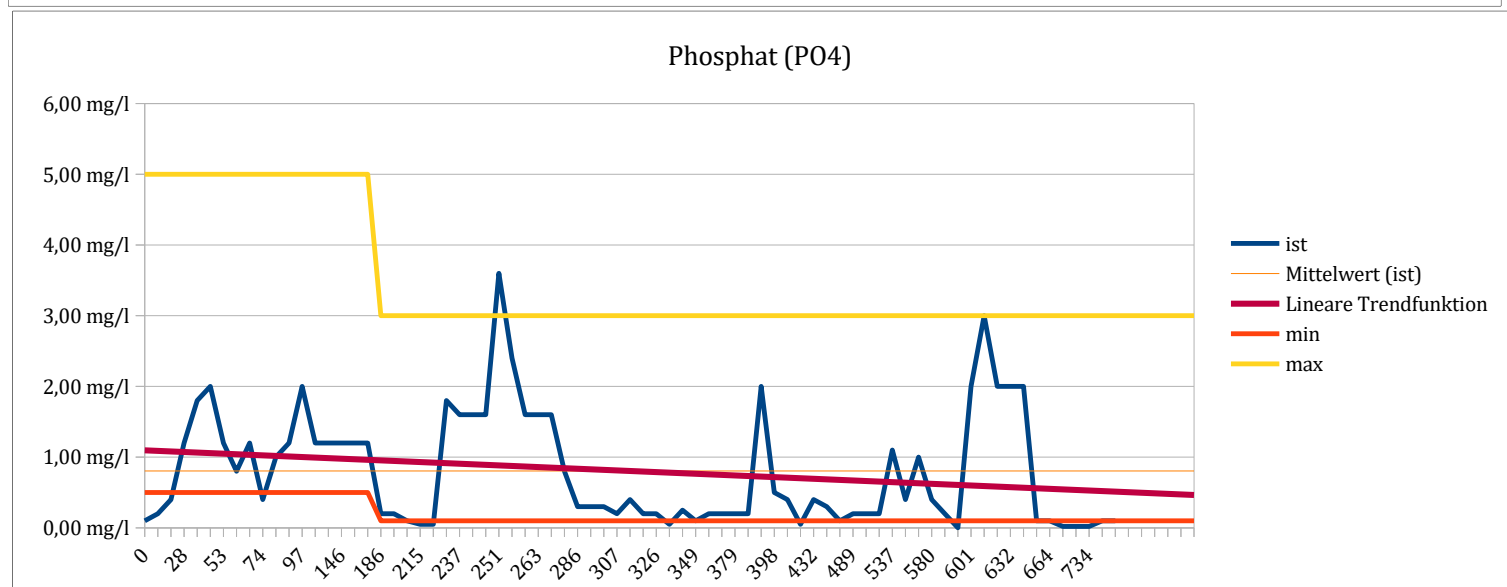
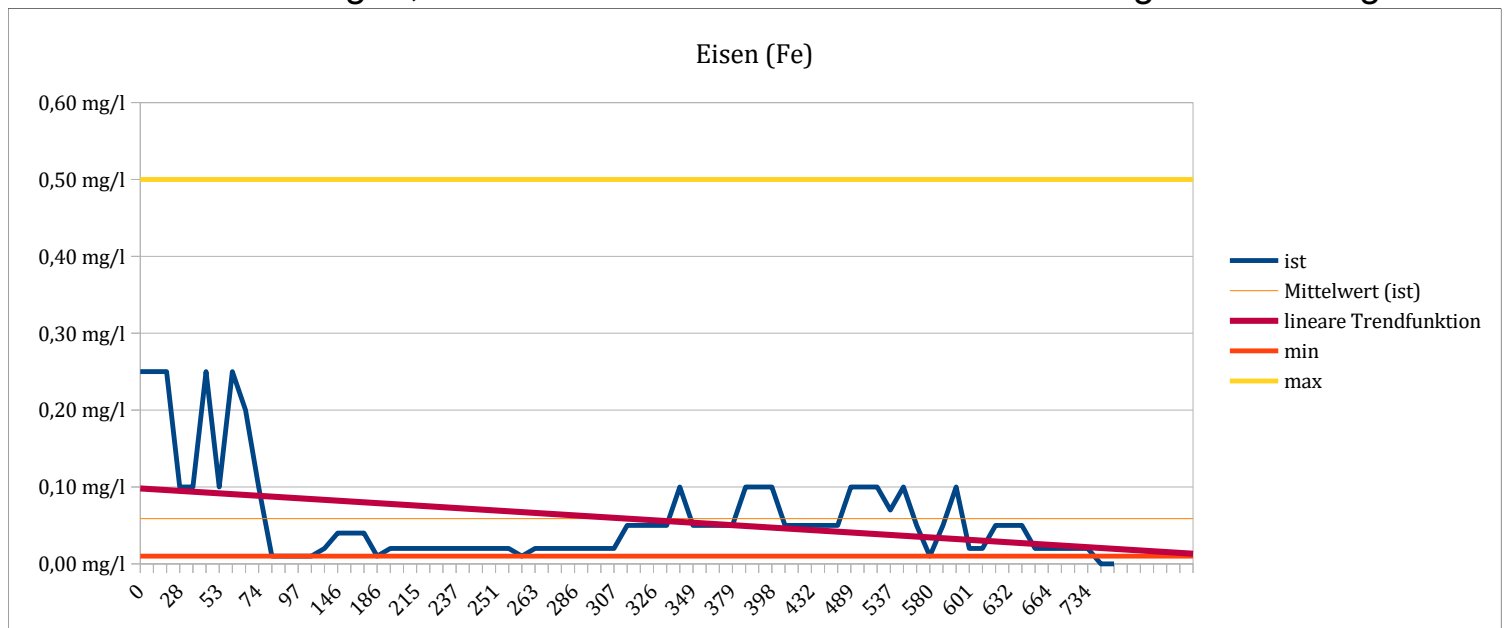
Monitoring seit 754 Tagen



Migration der Analysen

Zeitachse in Tagen, Stand: 04.01.25

Monitoring seit 754 Tagen



Zeitachse in Tagen, Stand: 04.01.25

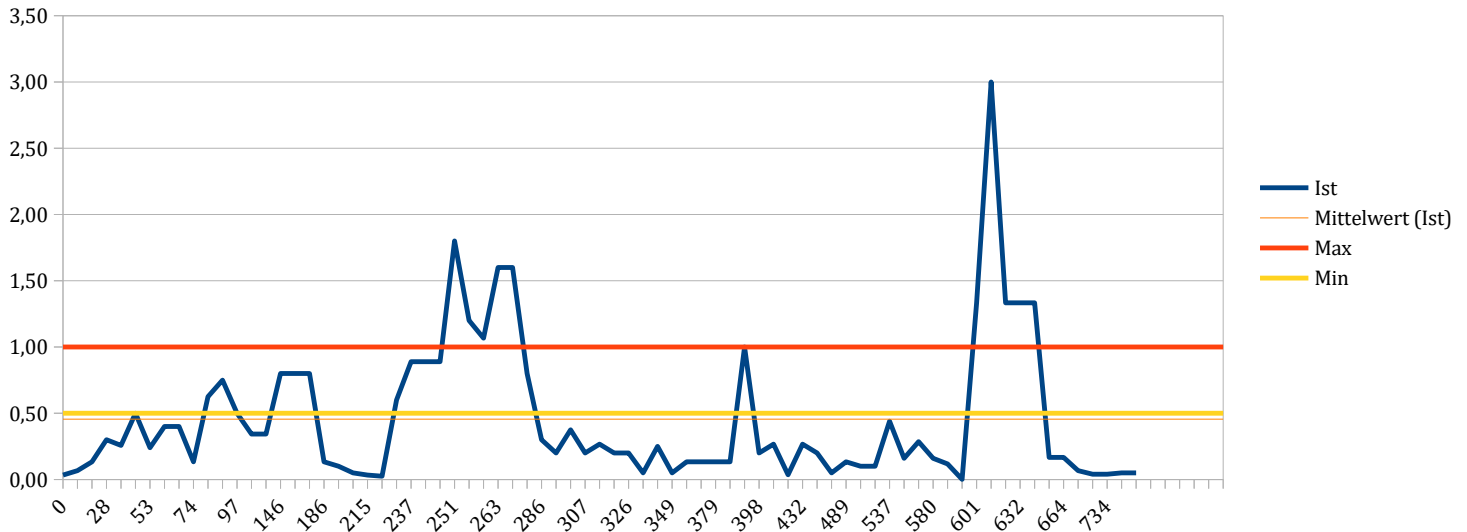
Monitoring seit 754 Tagen

Migration der Analysen

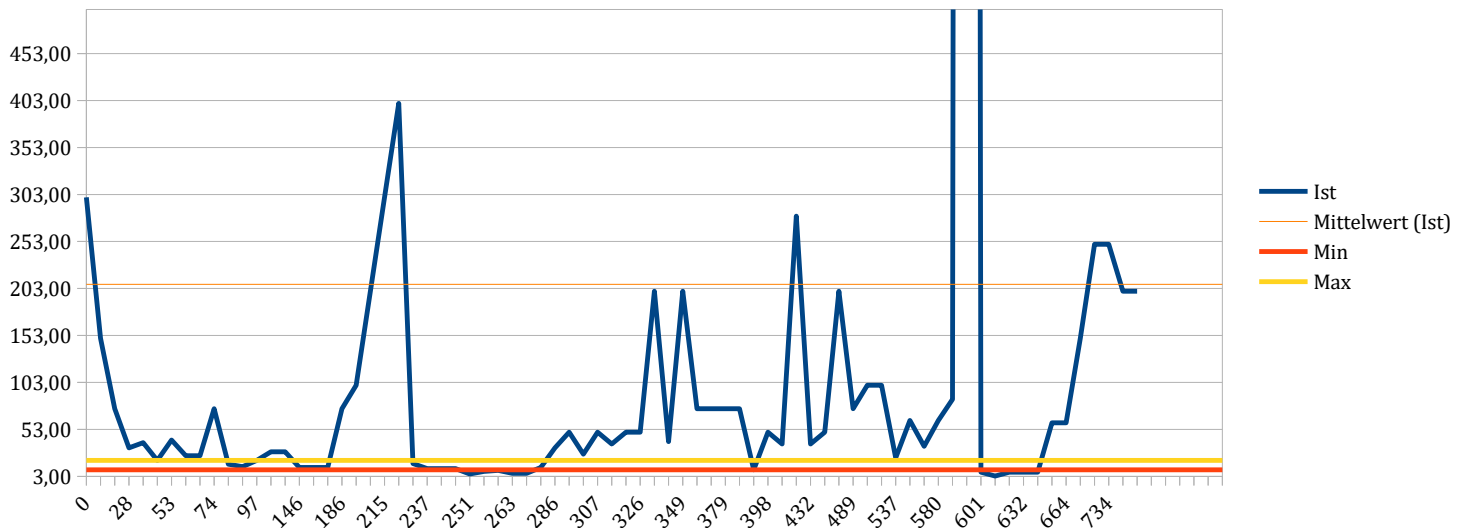
Zeitachse in Tagen, Stand: 04.01.23

Monitoring seit 734 Tagen

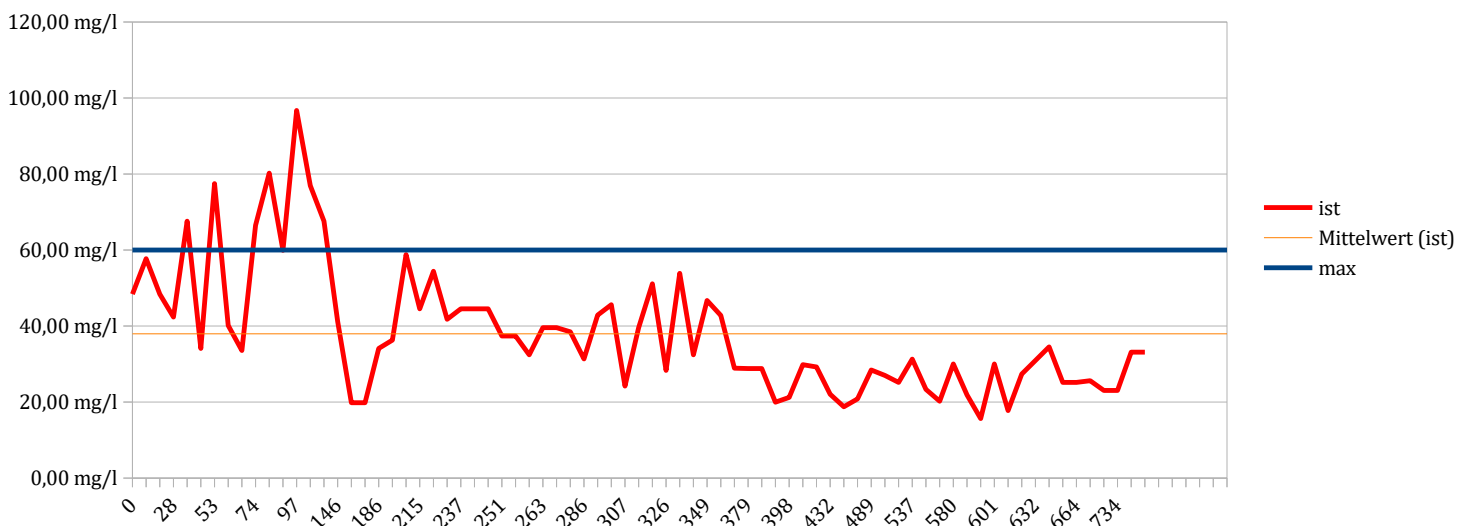
10-faches Verhältnis P04:NO3 also P04:NO3 -> (max) = 1:10; min = 1:20



Verhältnis NO3:P04



Konzentration von Ca



Migration der Analysen

Zeitachse in Tagen, Stand: 04.01.25

Monitoring seit 754 Tagen

