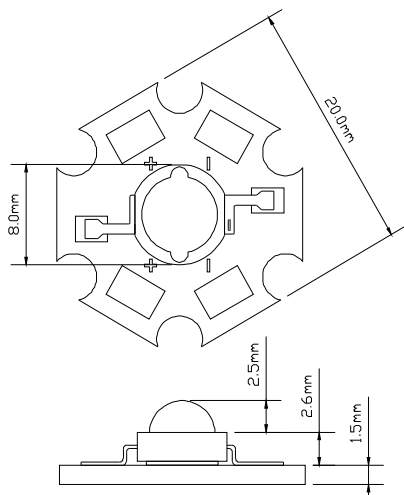




## Package Dimensions

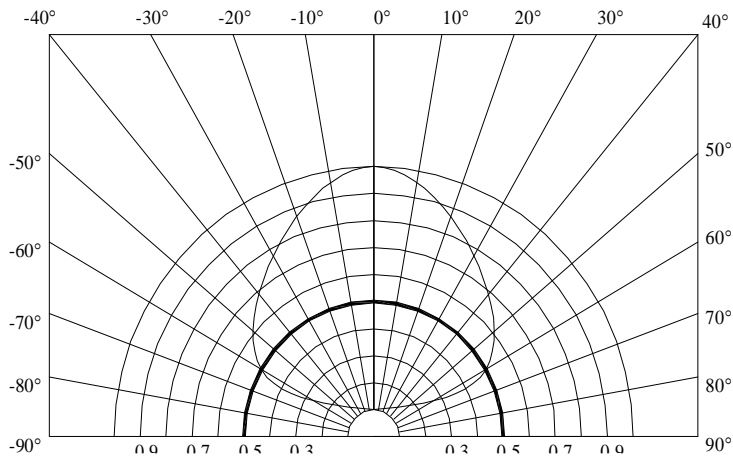
## SPECIFICATION FOR APPROVAL



### Notes

1. All dimensions are in millimeters (inches).
2. Tolerance is  $\pm 0.25\text{mm}$  (0.010") unless otherwise noted.
3. Protruded resin under flange is 1.0mm (0.04") max.
4. Lead spacing is measured where the leads emerge from the package.
5. Specifications are subject to change without notice.

## Spatial Distribution



PART NUMBER	REV	PAGE	DATE
SS-3WW140160	R101	1/4	2009-02-14

**Electrical / Optical Characteristics at TA=25°C**

Parameter	Symbol	Min.	Typ.	Max.	Unit	Test Condition
Luminous Intensity	$\Phi$	140	150	160	lm	IF =750mA
Viewing Angle	$2\theta$	1/2	120		deg	IF =750mA
Domain Wavelength	Tc	9000	10000	11000	K	IF =750mA
Spectral Line Half-Width	$\Delta\lambda$				nm	IF =750mA
Forward Voltage	VF	3.20	3.40	3.60	V	IF =750mA
Reverse Current	IR			20	$\mu$ A	VR = 5V

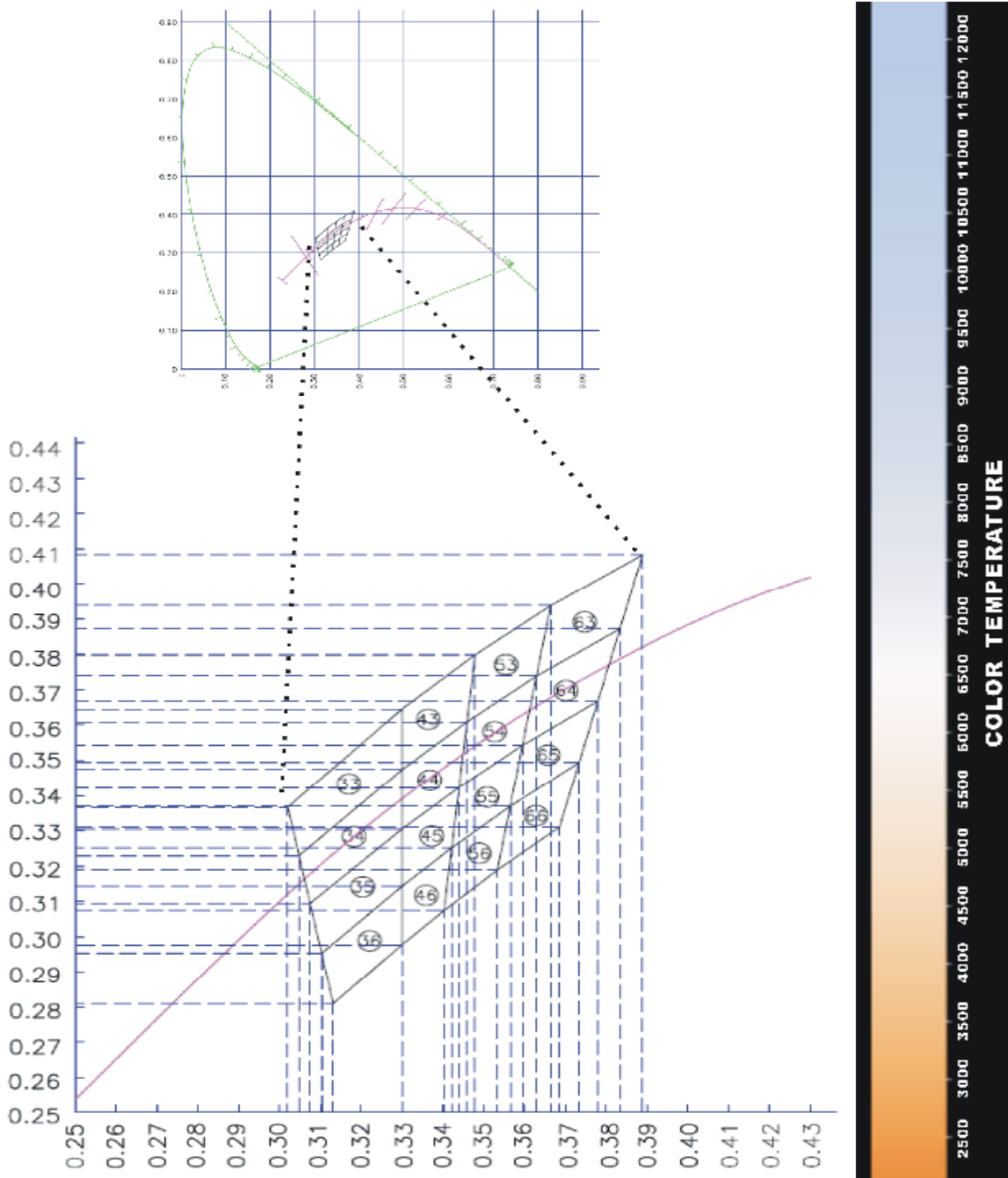
**Absolute Maximum Ratings at TA=25°C**

Parameter	Maximum Rating
Power Dissipation	3W
Peak Forward Current (1/10 Duty Cycle, 0.1ms Pulse Width)	1000mA
Continuous Forward Current	750mA
Derating Linear From 30°C	0.8mA/°C
Reverse Voltage	5V
Operating Temperature Range	-30°C to + 60°C
Storage Temperature Range	-30°C to + 60°C
Lead Soldering Temperature [1.6mm(.063") From Body]	260°C for 5 Seconds

PART NUMBER	REV	PAGE	DATE
SS-3WW140160	R101	2/4	2009-02-14



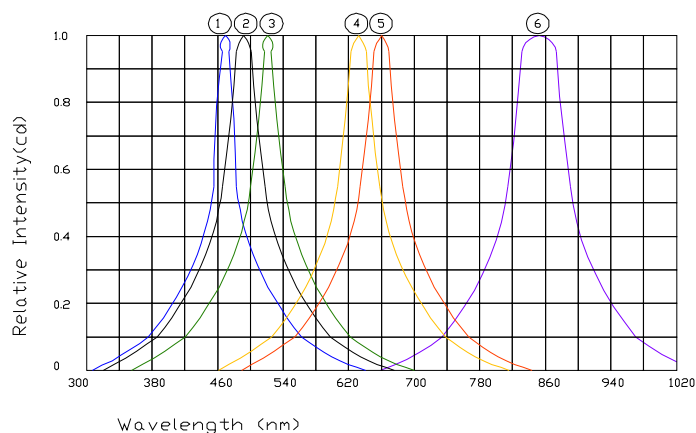
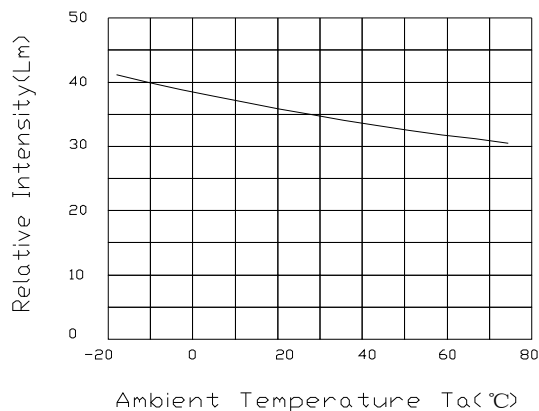
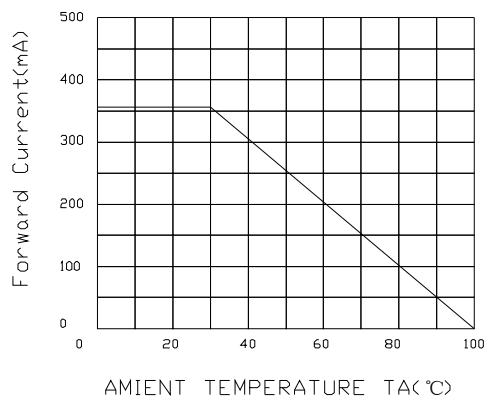
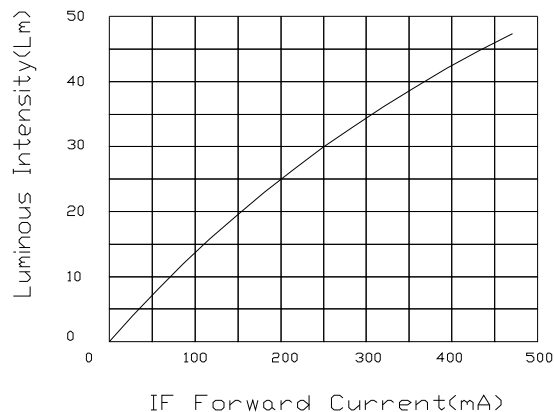
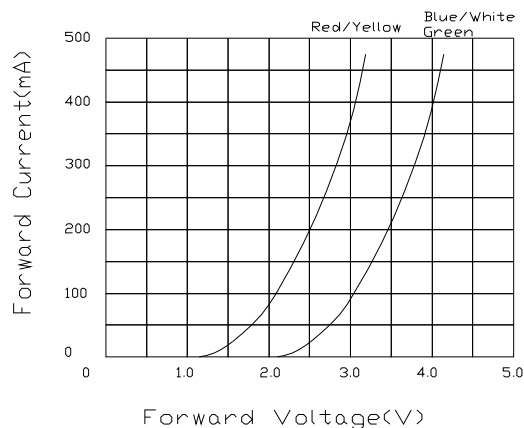
## Chromaticity Coordinate Groups



PART NUMBER	REV	PAGE	DATE
SS-3WW140160	R101	3/4	2009-02-14



## HIGH POWER LED Typical Electro-Optical Characteristics Curves



- ① Blue Lamp(InGaN)
- ② White Lamp(InGaN)
- ③ Pure Green Lamp(InGaN)
- ④ Yellow Green Lamp(AlInGaP)
- ⑤ Red Lamp(AlInGaP)
- ⑥ Infrared Lamp(850nm)

PART NUMBER	REV	PAGE	DATE
SS-3WW140160	R101	4/4	2009-02-14